

# 客家山寨简介



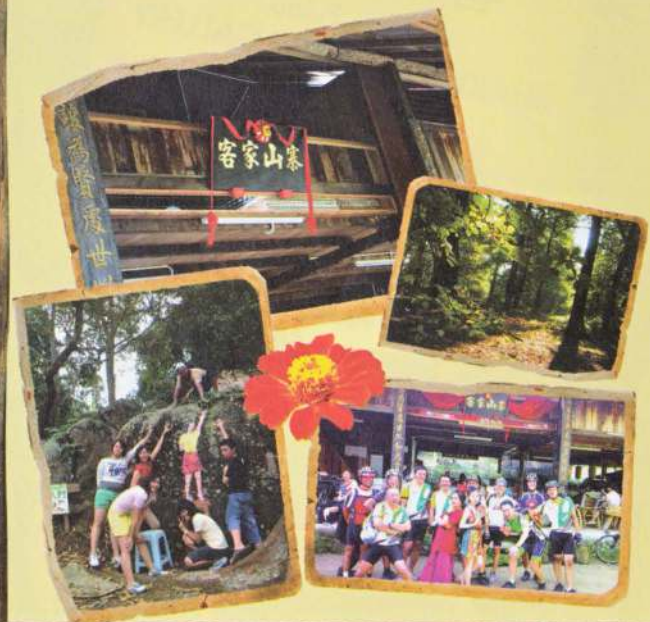
## About Balik Pulau Lodge

客家山寨：位于槟城浮罗勿洞一个海拔约300尺的山上，是一个集合生态旅游、客家民俗文化、爬山骑脚车、休闲露营、挑战体能、团体训练的果园渡假村。

占地约12亩的果园以榴连树及豆蔻树为主，其他水果约40几种星罗棋布于山寨内。山上气候凉爽、空气新鲜充满负离子，处处可遥望海景远山，风景如画。

Balik Pulau Lodge; located in Pulau Betong, Penang at an altitude of about 300 feet of the sea level. We offered a glimpse of the very traditional Hakka folk culture and a multitude activities ranging from mountain bike climbing, recreational camping, physical strength challenge and group training recreational orchard resort.

We have 12 acres of orchards which with durian tree and cardamom tree and 40 local tropical fruits in the Balik Pulau Lodge. Visitors get to enjoy the cool mountain climate, the air is fresh and surrounded by greeneries, spectacular mountains and sea view.



## 位置图 Location Map



## 客家山寨 Balik Pulau Lodge



欲知详情，请联络：  
For more information, kindly contact:

Mobile: +6016-411 6666 Tel: 604-2829 666  
Address: 61, Jalan Bukit Kebun Kha, Pulau Betong,  
MK 7 Balik Pulau Penang 11020 Malaysia.

Website: [www.balikpulaulodge.com](http://www.balikpulaulodge.com)  
Email: [info@balikpulaulodge.com](mailto:info@balikpulaulodge.com)

[balikpulaulodge/客家山寨](https://www.facebook.com/balikpulaulodge/)

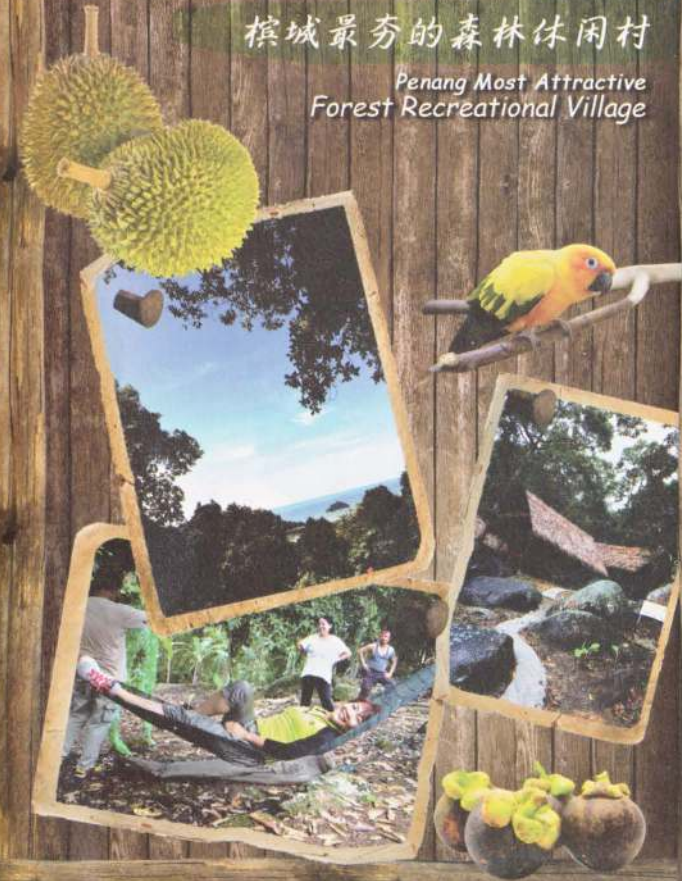
# 探索·寻味 客家山寨

Balik Pulau Lodge

## Explore Hakka Culture Traditional Hakka Big House

槟城最秀的森林休闲村

Penang Most Attractive  
Forest Recreational Village





## 住在山寨

Staying In The Balik Pulau Lodge

山寨内有一间历史悠久的百年客家老屋, 楼下可充作活动中心。楼上可睡20人至30人。这里有非洲式帐篷, 流动帐篷, 特制蚊帐吊床, 野战迷彩蒙古包。这些帐篷区围绕着百年古老大屋, 游客可根据本身经济预算, 以不同价格来选择住宿体验。

大屋楼下能充當讲堂训练室, 企业训练讲座可容纳60至80人, 备有投影机及音响系统等。

The centuries old traditional Hakka house can catered to various activities and training needs. The first floor can accommodate max to 30 guests. The camp site is just adjacent to the big house. Here, we provide about 10 African-style tents and 20 mobile tents, six mosquito nets hammock, a field camouflage yurts.

The old Hakka big house is surrounded by the tent, visitors can do at different prices according to their own economic budget stay.

团体配套(两天一夜) - 包吃, 住, 室内外团体训练 **RM 180**

Group package (2 days one night stay) included food, indoor and outdoor group training

家庭配套 - 包上下山接送吃和住 **RM 145**

Family package included transportation to and fro, food & stay



## 吃在山寨

Dining At Balik Pulau Lodge



RM 35 单人 /per pax

包上下山载送及8样客家菜

8 choices of Hakka dishes, transportation to and fro included.



## 客家历史古物

Hakka Relics

客家山寨里保留着百年客家老屋, 客家木鼓, 石磨, 大铁锯, 树桐木椅, 大岩石等供喜爱历史的学者上山来考察与研究。

We extend a warm welcome to all of you come up to the valley experienced yourself the Hakka culture in the big traditional Hakka house in Balik Pulau, you will have unique experience to visit centuries old Hakka traditional house which with relics of the past such as antique wood chair, wooden drum, large stone and antique "Bullock Cart" which is even bigger than a human beings etc.

What are you waiting for? Lets joint our Hakka cultural trip in traditional Hakka house.

浮罗山背  
客家文化馆

Balik Pulau  
HAKKA HERITAGE GALLERY

入门票  
Entrance Fees  
RM 20

